

INTO THE WOODS...

Volume 26/ Issue 1

50 PENN PLACE ART GALLERY 5000 N. PENNSYLVANIA AVE, OKLAHOMA CITY, OK

This prestigious fine art gallery was founded in 1993 by Oklahoma artists, including world renowned Bert Seabourn. The gallery is owned and operated by professional award-winning artists, with guest artists displaying their work on a two-month rotating basis.



IT'S BEEN AWHILE SINCE WE TALKED...

We hope everyone is enjoying the summer weather! This year kicked off at full speed and hasn't slowed down since. Between custom orders, craft shows and finally tackling projects around our own homes, we've been keeping busy.

In February, we received an email from Connie, co-owner of 50 Penn Place Art Gallery in Oklahoma City, inviting us to be a guest artist. To say we were surprised would be an understatement. We eagerly accepted and marked May 1st as our setup date.

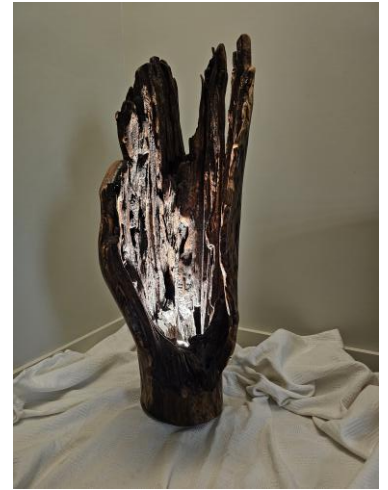
With this opportunity ahead of us, our creativity went into overdrive. When we came across a truly unique piece of walnut, we knew it deserved something special. We ultimately transformed it into a standing lamp. Preserving the natural contours and character of the log presented some challenges, but the final result made every effort worthwhile.



We wanted to preserve the natural beauty of this stunning piece as much as possible, but it did require some repairs. Joel stabilized the back with three inlaid bow ties - a new challenge on a curved surface! The interior contours also needed careful cleaning and sanding by hand with rasp tools. It was a meticulous process, but very satisfying!



Photos simply don't do justice to the intricate details and natural beauty of the finished piece. Seeing it in person is the only way to truly appreciate its character and craftsmanship.



Some other pieces we have at the gallery...



If you are in the OKC area, we hope you can stop in!

Joel and Diane

Jodi Wood Artisans, LLC
Norman, Oklahoma
jodiwoodartisans.com
jodiwoodartisans@gmail.com

Our products are currently available at:
50 Penn Place Art Gallery
The Depot in Norman
Norman Firehouse Art Center
Royal Pipes and Tobacco
Wunderhaus Design

Tree fact! "Woodn't" you know? The most populous and widespread trees in Oklahoma are the Post Oak and Eastern Red Cedar.